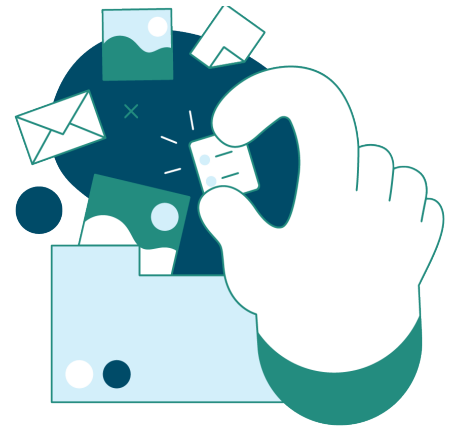


# Paperless EOB

**Save Time and Paper.** An Explanation of Benefits (EOB) Summary explains how your claim was processed and how charges were allocated based on the criteria outlined in your health plan. Now you can receive an email notification when your EOB is available to view online.

Reduce your carbon footprint, access your EOBs anywhere from a mobile device or computer, and keep your private medical information from being mailed.



## Get Started Today.

1. Visit [webtpa.com/lsu-first](http://webtpa.com/lsu-first) and select the green box that says “Login” and then select the “Member Log In” option from the drop down menu.
2. If you already have an account, log in to access your member homepage. If you do not have an account, you can register and create an account on the member portal in a few easy steps. You will need to have your health plan ID card ready to register.
3. Once logged in to your account, click on the “Profile” icon at the top right side of the page.
4. On the right-hand side of your profile, the “Explanation of Benefits” delivery option is available. Select the “Paperless” option and click update.



**Get more information.** Visit your Resources page on your member portal or call 855.346.5781 to speak with a customer service representative.